



## Clinical implications

The presence of B27 antigen (HLA-B\*27) is strongly associated with ankylosing spondylitis (AS) and other inflammatory disorders. The frequency of HLA-B\*27 allele in Caucasian population is in range 5–10% and in AS-patients occurs in more than 85% cases. The absence of HLA-B\*27 allele is a strong negative predictor for diagnosis of AS.

## Principle of detection

The kit is intended for detection of HLA-B\*27 allele in samples of human DNA. Detection principle is based on real-time PCR method with allele specific primers and fluorescently labelled hydrolyzation probes.

## Available products

Cat. No.	Product	rxn
3257-025	gb GENETIC HLA-B*27	25
3257-100	gb GENETIC HLA-B*27	100

1 kit contains reagents to provide 25 or 100 PCR reactions (20 µl volume of each reaction).

## Parameters of the diagnostic kit

- *in vitro* diagnostics
- CE IVD marked
- ready-to-use assay
- sample concentration 1-100 ng/µl
- positive and negative controls included
- FAM and HEX channels detection
- identical amplification profile as gb HEMO, gb GENETIC, gb PHARM kits

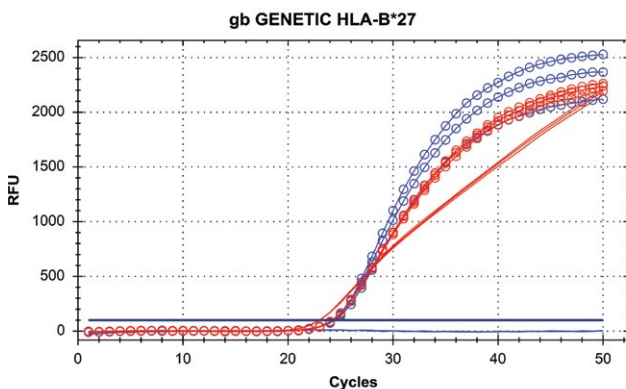
## Content of the diagnostic kit

Component <sup>1)</sup>	Volume	Qty <sup>2)</sup>	Conc.
● Assay qPCR HLA-B*27	0.4 ml <sup>3)</sup>	1   4	1,25×
● Standard NEG HLA-B*44	0.2 ml	1   1	5×10 <sup>3</sup> cop/µl
● Standard POS HLA-B*27	0.2 ml	1   1	5×10 <sup>3</sup> cop/µl
● Deionized Water	1.0 ml	1   1	

1) tube lid color

2) number indicated for 25 / 100 reaction package

3) 0.4 ml equates to 25 PCR reactions of 20 µl volume



## Validated for cyclers

- CFX96/96Touch (Bio-Rad)
- QuantStudio 5 (Applied Biosystems)
- RG 3000 (Corbett Research)

Fig. 1 – Detection of HLA-B\*27 standards on CFX96 device; blue line – NEGATIVE; red line – POSITIVE; smooth line – FAM channel; dotted line – HEX channel